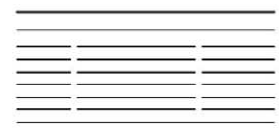
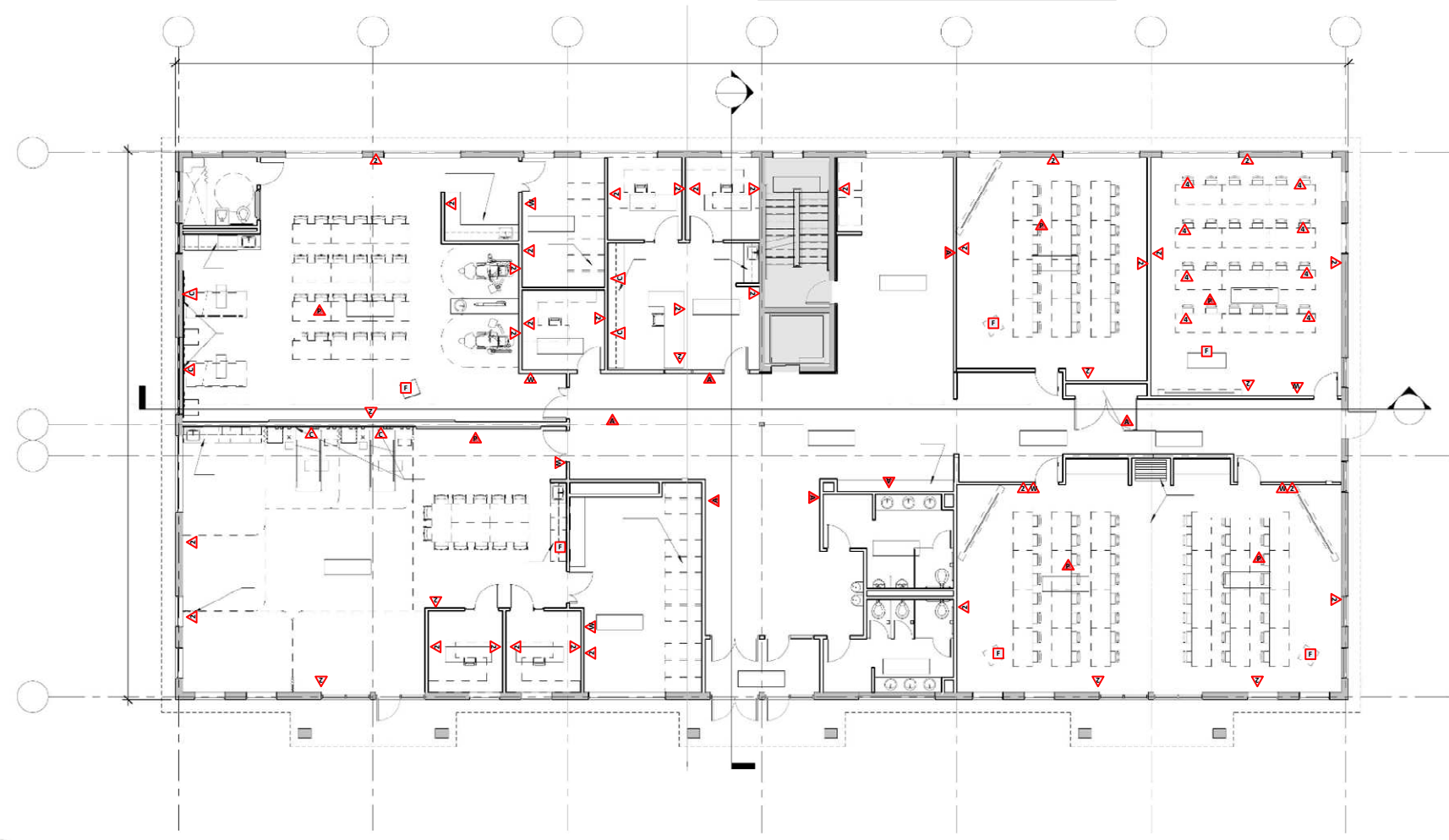




- ▲** Campus "Standard" Wall Mounted Outlet
Provide Two (2) Cat. 6A Cables in recessed double gang box with single gang trim ring mounted at standard Outlet height. Provide One (1) 1-1/2" Conduit to accessible cable management system.
- ▲** Campus "Counter" Wall Mounted Outlet
Provide Two (2) Cat. 6A Cables in recessed double gang box with single gang trim ring mounted at counter outlet height. Provide One (1) 1-1/2" Conduit to accessible cable management system.
- ▲** Campus "Wall Phone" Wall Mounted Outlet
Provide One (1) Cat. 6A Cables in recessed double gang box with single gang trim ring mounted at 54" above finished floor. Coordinate exact location with room finishes. Provide One (1) 1-1/2" Conduit to accessible cable management system.
- ▲** Campus "Ceiling" Mounted Outlet
Provide Two (2) Cat. 6A Cables above finished ceiling terminated in wall mounted surface box above finished ceiling.
For use with wireless access points, digital signs or surveillance cameras.
- ▲** Campus "Projector" Mounted Outlet
Provide Two (2) Cat. 6A Cables above finished ceiling terminated in wall mounted surface box above finished ceiling. Location requires dedicated 30 amp circuit. Exact location to be determined by the placement of the projector.
- Campus "Floor" Mounted Outlet
Provide Four (4) Cat. 6A Cables, One (1) duplex receptacle, One (1) coax to floor mounted 5 gang box. Provide 3 1-1/2" conduit to accessible cable management system.
- ▲** Campus "Standard" Wall Mounted Outlet
Provide Four (4) Cat. 6A Cables in recessed double gang box with single gang trim ring mounted at standard Outlet height. Provide One (1) 1-1/2" Conduit to accessible cable management system. Dedicated 20 amp circuit at each location with 4 gang outlets.



**AYERS
SAINT
GROSS**

ARCHITECTS + PLANNERS

