

Watching the Dream Unfold

At 35, HCC's founding vision is alive and growing



HOWARD
COMMUNITY COLLEGE

You Can Get There From Here.

Board of Trustees



Roberta E. Dillow
Chair



Louis G. Hutt, Jr.
Vice Chair



Roger N. Caplan



Patrick L. Huddie



T. James Truby



Katherine K. Rensin



Mary B. Tung
(On leave of absence)

The HCC Vision

Howard Community College is a dynamic, creative learning community that strives to meet challenges by providing innovative solutions leading to learning breakthroughs for all students. We are dedicated to establishing strong student and community connections and to working together to stimulate students, faculty, and all members of our learning community to develop their talents and to discover their greatness.

The HCC Mission

Howard Community College creates an environment that inspires learning and the lifelong pursuit of personal and professional goals. The college provides open access and innovative learning systems to respond to the ever-changing needs and interests of a diverse and dynamic community. As a vital partner, HCC is a major force in the intellectual, cultural and economic life of its community.

2004 Commission on the Future of HCC

Jeffrey Agnor | James Anderson | Nasser Basir | Joanne Davis | Jared Fast | Michael Galeone
Richard Krieg | James Lee | Richard McCauley | Elizabeth Murphy | Maurice Simpkins
Richard Story | Virginia Thomas | Thomas Tuttle | Natalie Woodson

Technology Advisory Board

Robert Baruch | Nasser Basir | David Bower | Vicki Duvan | Steven Fritz | Donald Hester
Larry Letow | Steven Lindeman | Joseph Patanella | Daniel Schoenberger | Mark Simons
Carolyn Sherman | Donald Spicer | R. Jamie Spriggs | Robert Wallace | Clarence Wooten, Jr.

Message from the President

Anniversaries are always enjoyable as one looks back and sees the changes that have taken place over the decades – the new buildings, advances in technology, more and more students, and, of course, the changing fashions and hairstyles.



But as HCC marks its 35th year, it is especially gratifying to celebrate our anniversary with people who were there at the beginning. Many of the original trustees, elected officials, administrators and faculty are still connected to HCC and can provide a perspective of how the college's founding vision has crystallized.

Recognizing the immense value of this perspective, HCC has reached out to its founders and captured their memories and musings in interviews and writings. Their views on the past and present of HCC are part of this special anniversary edition of our Annual Report to the Community. In addition, we sought out students who were here in that first 1970-71 school year to reflect on their experience at HCC and how it contributed to their lives.

The combined effect of these perspectives is an exciting realization: The founding vision of HCC has remained strong through three and half decades and promises to remain vibrant into the future.

HCC's story is part of the Howard County story, so we are eager to share it with you. We hope you will celebrate with us!

A handwritten signature in black ink, appearing to read 'Mary Ellen Duncan'.

Mary Ellen Duncan
President

Watching the Dream Unfold

2005 ANNUAL REPORT TO THE COMMUNITY

CONTENTS

Watching the Dream Unfold	Page 2
At 35, HCC's founding vision is alive and growing	
Highlights of FY2005	Page 8
The year in headlines	Page 10
Enrollment, budget and other HCC numbers	Page 11
HCC Educational Foundation Donor Report	Page 12

Watching the Dream Unfold

At 35, HCC's founding vision is alive and growing



Top: Students at HCC today.
Above: Before HCC was built, staff worked in the Board of Education building, formerly the Harriet Tubman School.

"The college today is everything we envisioned. This is what we wanted to develop, and to see that it has developed just makes me overjoyed."

With those words, Gertrude Crist beams like a proud parent when she talks about Howard Community College, the institution she helped shape as an original member of its board of trustees.

A visit to campus reveals the source of her pride. Groups of students cross the neatly groomed quadrangle stretched out between a horseshoe of clean, modern buildings; construction crews swarm on and around the frames of two rapidly rising new buildings; faculty stop to exchange notes and remark on the scores of new faces in their classrooms.

To have envisioned all of this 35 years ago, Mrs. Crist and her fellow trustees clearly had broad imaginations. In 1970, the entire college consisted of a single building in the midst of a town that was just beginning to take shape.



In June 1969, HCC's first shovel of dirt was turned by Trustee Chair Frederick Schoenbrodt (left), Senator James Clark (center) and County Council Chair Alva Baker.

A Young Columbia

"At that time, Columbia was in its infancy," recalls HCC's first president, Dr. Alfred Smith. Little Patuxent Parkway, the wooded thoroughfare that runs past the campus, was little more than a dirt road weaving its way through farmland. Only three of the town's villages had been completed, and the modest population numbers showed few signs of sudden change.

As for the college, its only building stood at the edge of a vast, 120-acre plot, with only an old silo and a barn to keep it company. "It wasn't all that uncommon for cows from the neighboring dairy farm to wander into our parking lot," says Dr. Smith, chuckling at the memory.

In its way, Columbia was a frontier town, pressing out at the edges of the established metropolitan area, its settlers searching for greater opportunities and a better way of life. In turn, HCC packed educational innovation and enthusiasm into its single facility, eager to help the town and the county at large grow into a dynamic community.

Laying a Foundation

October 12, 1970, was a day greeted with great anticipation by Howard Community College's first class of 611 students, ten full-time faculty members and thirty adjunct professors and support staff. Finally, four years since the Howard County Commissioners had approved the idea, the college would have a home.

All of the work leading up to that October Monday had been conducted off campus. And on that final weekend, faculty and staff put aside their sheepskins and hefted mops, rags and brooms to ready the



HCC THROUGH THE DECADES

March 1966
State of Maryland approves HCC as the state's 14th community college.

June 1969
Dr. Alfred J. Smith, Jr. named first president.

October 12, 1970
First day of classes.

June 1972
First commencement, 36 degrees awarded. Presidential candidate Terry Sanford was featured speaker.

two-story facility for its first pupils.

Professor Dan Friedman, one of the ten original faculty members, remembers the scene well: "Everyone showed up in their jeans and sweatshirts, and there was a great deal of rushing about—mopping, cleaning up, making sure the all the blackboards were wiped down and that there was chalk in the trays."

"I do remember that a lot of glass cleaner was used on Sunday," laughs Professor Vlad Marinich, a colleague of Friedman's on the original HCC faculty. "There certainly was a lot of camaraderie among that group right from the start."

Sense of Purpose

There was, Professor Marinich asserts, an almost palpable sense of purpose at the college, even as it unlatched its doors for the first time.

"Back then, we were involved in everything, from policies and procedures to just figuring out where to put stuff," he says. "But there was a distinct feeling among all of us that we were here to 'transmit knowledge,' if you will, to a new, hungry group of learners. We were here to get to know and to serve the students. It was exciting."

This was truly a new group of learners, not simply a new class of freshly minted high school grads. Along with the younger students in HCC's first class, there were veterans from both the Korean and Vietnam wars; housewives looking to return to the workplace; empty-nesters interested in a second career; and professionals seeking specialized training to help them advance in their fields.

A Different Kind of Instruction

From the beginning, HCC staff and faculty recognized that such a diverse student body would have equally diverse expectations and goals for their education.

As a result, explains Dr. Smith, the school sought out a different kind of instructor. "We wanted well-qualified people who were flexible, adaptive, who had ideas and were willing to change. We were embarking on a new educational program for students...and we were looking for directors of learners, people who would help students



Students help clean HCC's grounds the weekend before classes started on October 12, 1970.



Because the college did not yet exist, students registered for HCC's first semester at Slayton House in Wilde Lake.

THEN & NOW: Student Profile



Paulette Clem
Chief of Legislation and Regulation
Maryland Department of Health
and Mental Hygiene

For as long as she can remember, Paulette Clem planned to be a social worker. "I even had that down in my high school yearbook as what I wanted to do when I finished school," she recalls. Ultimately, she realized her goal, and now serves as the Chief of Legislation and Regulation for Maryland's Alcohol and Drug Abuse Program. Her career path, though, ended up somewhat less direct than she had planned.

"My husband and I had a plan," she explains. "I'd work in order to help put him through college, and when he was done, I would go. But just as he was finishing up, our first child came along." The Clem family added another child before Paulette decided it was time for her to make good on her promise to herself, and she became one of the first students at Howard Community College, often taking her two children to class with her.

"I remember how good the instructors were," she says, "and what an impression they made on me.

"There was a lot of understanding and encouragement there," she says, "and that's what I needed."

Reassured by her success at HCC, Clem went on to take a master's degree from the University of Maryland School of Social Work, one of the field's premier institutions. "But HCC," she acknowledges, "made a big difference for me."



MRS. GERTRUDE CRIST
HCC Trustee 1968-1970

"What was so wonderful about the people of Howard County is that they also had a vision of what they wanted [for the college]. And look what we have! I'm just so grateful that I was part of it."



May 1976
Nursing Education Building opens for classes.



February 1977
Physical education center and athletic fields open.

April 1975
Full accreditation awarded by the Middle States Association of Colleges and Secondary Schools.

Winter 1977
Administration building and theatre opens.

THEN & NOW: Student Profile



Carol Gamble
Realtor

Century 21/HT Brown Realty

Carol Gamble is not only a member of Howard Community College's first class, but also a pioneer member of the city of Columbia. "I took an apartment here in 1968, and it was just a wonderful time," she recalls fondly. "Everyone was new and had a story to tell about where they'd been and why they came, and we were all excited to be here." Gamble found new excitement, and a career she fell in love with, when HCC opened its doors two years later.

Gamble signed up for a real estate class at the college. Having taken a job in the mortgage department of a bank, she felt a bit more insight into the process would help her at work. In fact, it started a successful career that has spanned nearly thirty years.

"When I enrolled for the class, I was just happy at how convenient it was," she says. "But when I got there, it was so exciting. The teachers were great, the classes were great, and I fell in love with real estate. It absolutely made my career."

HCC, she says, continues to help her career to this very day by providing the kind of asset that makes area homes easier to sell.

Though happily established in her chosen field, Gamble continues a life-long learner, squeezing an occasional class at the college into her busy schedule. "It seems there's always something else I want to take," she laughs.

develop according to their own talents."

Professor Friedman relished the opportunity, and leapt in with both feet. "Rather than simply assign texts or problems, I would tape lessons for students to listen to on their own time and at their own pace. Sometimes I'd write a poem or a song to start things off, to keep things interesting and fun" he says with a smile, snatching a couple of half-remembered verses from memory.

HCC implemented a systematic program that would measure student performance beyond term papers and test

scores. Using this program, educators could determine whether students had absorbed the contents of their courses, and then, using this data, make whatever adjustments they thought necessary to improve their teaching.

HCC's student outcomes assessment program was one of the first of its kind. While the concept has slowly gained traction in higher education over the past two decades, HCC remains a leader among its peers in understanding—and hence improving—student performance.

Growing with the County

With such progressive principles in place, Howard Community College was well prepared to grow along with a county that would see remarkable expansion over the next three-and-a-half decades. As the county's population swelled and diversified, so did the college's enrollment.

In 1970, just over 600 students attended classes in HCC's nine credit programs. Today, nearly 7,000 are seeking degrees in more than 100 programs. This includes



Former Trustees
Celonia Walden and Leola Dorsey
have attended every HCC commencement – 33 in all.



The HCC campus in the 1980s.



James Clark, Jr.
Former Maryland State Senator

"[HCC] started off very modestly. Nobody ever thought it would grow like it's grown. It's a major institution now."

"The college has just continued to grow and we're very proud of it. It's a real treasure or the county because to get a decent job today you need a college education, no question about that. Howard is very highly rated as a community college."



July 1981
Dr. Dwight A. Burrill becomes second president.



September 1989
HCC's first Grand Prix fundraising event held.

December 1978
HCC Educational Foundation established to develop financial support.

May 1982
HCC begins cable programming (later becomes HCC-TV)

nearly half of all Howard County undergraduate students who have chosen to remain in Maryland. Almost one quarter of all Howard County graduates fresh out of high school enter HCC each fall.

Growing economic sectors, such as health care and technology, have opened new opportunities, as did a burgeoning population of small businesses. New skills were required, new training needed, new employees sought. And HCC has responded by adding dozens of programs to address the ever-changing ways Howard County does business.

Business Training

Eleven years ago, the college developed the Business Training Center to serve as a central hub for its many business development courses. Today, HCC can offer customized, on-site training to area corporations—a service that more than 150 businesses utilize each year.

Well aware of its role in helping to promote the local economy, HCC has formed partnerships with numerous



A media lab in the 1980s.

organizations, including the Howard County Chamber of Commerce, Howard County Government, Howard County General Hospital, Howard County Public Schools, the Columbia Association, and scores of others.

And new buildings have arisen — ten more in all, with two more underway. They represent something of a timeline of the county's development and changing needs, and each one is a testament to HCC's determination to play a key role in Howard County's future.

Changing Technology

Developments in technology also have had a noticeable impact on Howard Community College. From the very start, HCC strove to keep abreast of changing technology.

Early on, this meant working with reel-to-reel tape recorders, followed by word processing, answering machines and eventually email. But now, it has changed more than administrative tasks; it has changed the face of teaching altogether.

Nearly every classroom now has



Today's HCC features a Cybercafe and a Starbucks Coffee kiosk.



DR. ALFRED SMITH, JR.
First HCC President

"I knew about Columbia, I knew what the initial concepts were, and I was very impressed with them. And I thought it would be a wonderful idea to come here and start a new community college based on this new planned city."

"I can only be impressed with the kinds of things that are going on here [today]. It's a very excellent institution."

THEN & NOW: Student Profile



Dorian Dowell
Computer Analyst
Science Applications International Corporation

"It seems like just yesterday that I was in school there," recalls Dorian Dowell, one of Howard Community College's original students in 1970. Thirty-five years later, Dowell is a computer analyst for Science Applications International Corporation (SAIC), the largest employee-owned research and engineering company in the United States.

When he returned from Vietnam, Dowell was eager to get his education, interrupted by his tour of duty, back on track. With a year of credits already to his name, he enrolled at HCC to prepare for admission to a four-year college.

"It was a little strange at first," he says, "because I was a bit older than the general crew, and the place was so small and new. But it was the teachers that really made it interesting." In addition, the college helped Dowell land his first job working with computers, a summer stint at the National Cash Register Company, now known simply as NCR.

After a year of general studies at HCC, Dowell transferred to the University of Baltimore, where he earned his degree in Business Data Processing, a predecessor of contemporary Computer Sciences. "It's amazing to see how the place has grown. It's really moving along," he says of the school today. "Looking back, I can honestly say that everything I learned [at HCC] was of value to me later in life."



1989
Science and technology building, student activities center, and Galleria open.

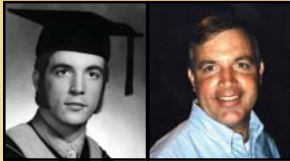
1990
Continuing education office moves to Hickory Ridge building leased from county government.

1993
Mediation and Conflict Resolution Center established.

1993
Rep Stage, an Actors' Equity Theatre in residence at HCC, opens.



THEN & NOW: Student Profile



Ralph Cullison III

*Chief of Environmental Services
City of Baltimore's Department of Water
and Wastewater*

Ralph Cullison helps ensure that the 265 million gallons of drinking water pumped daily to Baltimore's 2 million residents is of the highest quality. Thirty-five years ago, Howard Community College helped Cullison start down the path to this position, so critical to city dwellers.

Arriving at HCC with a high school diploma and a year of community college experience elsewhere, Cullison enrolled in classes in the biological sciences. From the moment he set foot in the new school's only building, he remembers an almost palpable excitement.

"As I recall, there were a lot of first year freshmen, as well as a lot of kids who'd been at four-year schools who were looking for some focus," he says. "There was a lot of enthusiasm—from the students and especially the faculty—about this new course of learning at the college. It was a great atmosphere, a great learning environment."

Cullison points to small classes and ready access to his professors as the defining elements of his HCC experience. He went on to earn bachelor's and master's degrees from Towson University.

"[HCC] is a great institution," he says. "If I had to do it again, I'd start there. In fact," he adds, "my oldest two children did just that."

computer terminals and digital projection systems, and email correspondence and online research is a given. But rather than becoming overwhelmed by exploding technology, HCC has harnessed it to further its original aim of serving students.

Distance learning—classes taught either partially or completely online—has begun to play an essential role in modern education. For those unable to adhere to a full-time class schedule, online elements allow flexibility. For degree students, the distance learning classroom provides interactive, in-classroom links to other schools and professors, expanding their class options exponentially. And the HCC Library provides essential support through its dozens of online databases, catalogs, and course-specific materials.

The Future

"Howard Community College is very much a plan that is still developing," explains Dr. Kate Hetherington, Executive Vice President of HCC. "Improvement and growth are always part of the plan."



Former President Burrill and James Rouse.

The last five years have been busy with improvements dramatically changing the face of the campus. In 2000, HCC opened a Children's Learning Center that serves both as a child care center and lab school for students. In 2003, the new Instructional Lab Building provided much-needed learning space and also created the Quad, a landscaped area popular with students.

Construction is underway for two new buildings that will complete the Quad area—the Peter and Elizabeth Horowitz Visual and Performing Arts Center and the Student Services Building.

"For a long time, we haven't had a dedicated space for the performing arts," explains Vice President of Academic Affairs Ron Roberson. "Yet the program has still grown, mainly as a result of the extraordinary faculty we've been able to attract." Mr. Roberson recalls the memory of teaching a drawing and painting class in a make-shift classroom adjacent to the theater stage, and watching the actors and dancers scurry through his students each time they exited the stage. "Finally, we're able to offer the kind of facility that the students and the faculty deserve."

Standing amidst the Smith Theatre, the black-box Theatre Outback, and the outdoor Dreier Stage, the Horowitz Center will serve as the centerpiece for the college's top tier arts program.

Student Services

The Student Services Building is being crafted to provide an immediate and reassuring sense of place for prospective and current students alike. Designed by Design Collective, whose recent projects include the Maryland Science Center in Baltimore's Inner Harbor and the Baltimore Visitor's



BERNADINE HALLINAN
Founder of HCC Nursing Program

"We aimed at having a program that could successfully be completed in two years and [students] could work and contribute to the community."

"The quality of the people graduating...was just outstanding. They were enthusiastic, they wanted to work, and they made major contributions."



1994

The Business and Technology Training Center (later named the Charles Ecker center) opens in Columbia Gateway.



July 1998

Dr. Mary Ellen Duncan becomes third president.



2000

Children's Learning Center opens.

2001

HCC creates Laurel College Center with Prince George's Community College.

Center, the new structure will house the school bookstore, cafeteria, financial aid services, tutoring and test centers, among other offices and services.

“We were able to work with the architects to ensure that everything about this building would instill a very warm and positive feeling in everyone who visits it, for the first time or the hundredth,” Dr. Hetherington said.

In November 2004, the HCC Educational Foundation acquired the Belmont Conference Center in Elkridge. The 82-acre estate features an 18th century Georgian manor home and a richness of county history. Envisioned as an ideal learning site for HCC’s fledgling hospitality management program, the college is in the process of creating a ten-year plan to determine how the estate can best serve the community and HCC students.

Tradition of Innovation

And continuing its tradition of innovation, Howard Community College entered into a unique partnership with Prince George’s Community College to open the

Laurel College Center.

“We were aware of the educational needs in the Laurel area, and the Laurel College Center helps meet those needs,” Mr. Roberson said. “Enrollment at the Laurel College Center has skyrocketed.”

“We’re always willing to take a risk if we feel the benefit to the students justifies it,” Dr. Hetherington said. “In this case, the results of bringing this kind of programming to an underserved area certainly justify that risk. It’s part of our nature here at HCC to do things that haven’t been done before.”

Just as it is certain that Howard County and its surrounding areas will continue to grow, expand and change, it is equally certain that HCC will continue to grow along with them, adding, adjusting and changing its programs and facilities to best serve its students, whomever they may turn out to be. But even in the midst of constant change, assures Dr. Hetherington, one thing will remain constant.

“No matter what you want, no matter what you need, HCC will help you take the steps to get there. Nothing about that commitment will ever change.” ■



DR. EDWARD COCHRAN
HCC Trustee 1966-68, 1985-91

“The college has always been a dynamic, growing institution... and [the growth] has been extremely productive.”

“It’s a great thrill to come here and see all this activity and the students busy...it’s great.”

THEN & NOW: Student Profile



Chuck Sharp
owner and operator
Waterford Farm

The Sharp family has been farming in Howard County for over a century, and Chuck Sharp, the owner and operator of Sharp’s at Waterford Farm, continues that tradition to this day. The 500-acre farm offers a fresh produce delivery service, corn mazes, educational tours and a host of other agro-tourism activities.

In 1970, Sharp, recently discharged from a stint in the Army, made good use of the G.I. Bill and joined a number of veterans in Howard Community College’s inaugural class.

“I remember that as a really fun time,” he says. “There was such a newness, a youth to it. There were a lot of kids out of high school, and a fair number of vets like myself. And the faculty, too, were young—about my age, roughly. It was all new and exciting.”

Given the rigors of life on a dairy farm, Sharp found HCC to be remarkably accommodating, allowing him to attend classes while still tending to his cows’ morning and evening milkings. “It worked out well,” he says, adding that, “I’m not sure if I could have done it otherwise.” In fact, it worked out so well that he was even able to find time to serve on student government for two semesters.

Sharp finished up his associate’s degree in 1972. He continued his studies, taking every class he could that he felt might help him keep his farm prosperous.



January 2003
Instructional Laboratory Building opens.



August 2004
Construction begins on the Horowitz Center for Visual and Performing Arts



November 2004
Belmont Conference Center purchased by HCC Educational Foundation



June 2005
Construction begins on Student Services Building.

HIGHLIGHTS OF FY2005



HCCEF purchases Belmont

Built in 1738, the Belmont estate in Elkridge is an historic treasure of Howard County. Since 1964, when a Washington-based organization acquired the estate and established a conference center, Belmont began taking on a new legacy as an educational and cultural center.

Beginning in November 2004, HCC has taken on stewardship of the estate. Purchased by the HCC Educational Foundation (HCCEF), the college is striving to preserve Belmont's legacy by:

- Strengthening its value as a cultural and educational resource, including continued operation as a conference center;
- Funding ongoing maintenance of the Belmont estate with strengthened revenues;
- Exploring additional avenues for sharing the Center's resources with the community.

A planning process involving the community was initiated in FY05 to create a master plan for Belmont.

Room Naming Honors Robert Kittleman

A highly-used meeting space in HCC's Instructional Lab Building was named the Robert Kittleman Room in April to honor the contributions of the late state senator to the college and to the community.

A large gathering for the ceremony included members of the Kittleman family and Governor Robert Ehrlich. The senator was especially known for his commitment to civil rights and his commitment to his family and to the people of this county. Senator Kittleman was a frequent visitor to the campus and showed great interest in the well-being of students.

HCC Wins Prestigious International Education Awards

HCC stood side-by-side with UCLA and three other prestigious colleges this spring when it won the 2005 Senator Paul Simon Award for Campus Internationalization.

The award, supported by the U.S. State Department, seeks to promote international education as crucial to U.S. strength and security. HCC was recognized for its study-abroad and foreign-language programs. Other colleges winning the award were: Colby College, Colgate University, University of California - Los Angeles, and University of Kansas.

In addition, HCC received the 2005 International Intercultural Achievement Award for its outstanding global education program. The award was given by the American Council on International Intercultural Education.



New Honors Program Named after HCC Pioneer

Named after a man who helped found the college, HCC will offer the Frederick K. Schoenbrodt Honors Program beginning fall 2005. Open to full- and part-time students of all ages, the new program offers flexible opportunities to fulfill general education requirements as part of a supportive, intellectual community that helps prepare them for more advanced study and transfer.

As a member of the Howard County Board of Education from 1962 to 1978, Mr. Schoenbrodt played a key role in the planning of HCC. He was the first chairman of the college's Board of Trustees.



New Athletic Facilities Dedicated

HCC continued development of its athletic facilities by dedicating four new fields for soccer and lacrosse and an eight-lane track. The fields are supported by a partnership with the Soccer Association of Columbia/Howard County. SAC\HC will share the maintenance costs and use the fields when not being used for college events.

New Programs

HCC continued to expand its list of majors and programs of study:

- Art History**
- Arts Administration**
- Bioinformatics**
- Communications Studies**
- Conflict Resolution**
- Entrepreneurship**
- Interior Design**
- Interpersonal and Organizational Communication**
- Journalism and Media Communications**
- Professional Coaching**
- Professional and Business Communication**
- Spanish**
- Secondary Education - Chemistry**
- Secondary Education - Mathematics**
- Secondary Education - Physics**
- Secondary Education - Spanish**
- Speech and Written Communication**
- Sports Coaching**



Ed Waddell Honored for Service to HCC

Edward Waddell, managing director of Cardoni Waddell, LLC, received the 2005 Trustees' Award for Outstanding Service to HCC.

Mr. Waddell has generously contributed his time, effort, financial expertise and funds to HCC over the years. He has held leadership roles as a director and treasurer of the HCC Educational Foundation and actively serves on various foundation committees. He has been instrumental in securing gifts from charitable organizations and individuals and has made substantial personal donations to support HCC, as well as generous sponsorships and services through his firm, including the Columbia Classic Grand Prix.

HCC's Test Center in Top 100

HCC was among the top 100 test centers in the country administering the most CLEP (College-Level Examination Program) exams in 2004-2005, according to The College Board. The test center administers a variety of exams to students from HCC and other colleges and universities, including University of Maryland, University College and the University of Phoenix.

State Recognizes Adult Education Program

The Maryland State Department of Education (MSDE) has awarded HCC's Adult Education Program an award of Excellence in Student Achievement. HCC achieved the highest pass rate among external diploma programs in the state.

Frankel Named HCC Outstanding Faculty Member

Sue Frankel, professor of English, is HCC's Outstanding Faculty Member for 2005.

Professor Frankel was recognized for her work including a highly successful on-line course, an exemplary reading program, and leadership of the cross-functional Developmental Education Team, which recently launched a pilot of "StepUp," an innovative case management system to improve retention and success rates for students.

Other full-time and adjunct Outstanding Faculty selected from their divisions were:

Arts & Humanities: **James Adkins**, assistant professor of art, and **Debbie Meyers**, adjunct instructor of dance

Business and Computer Sciences: **John Lafferty**, instructor of computer systems, and **Dawn Boettiger**, adjunct instructor of accounting

Continuing Education and Workforce Development: **Robert Leek**, adjunct instructor

English and World Languages: **Carol Wallington**, senior adjunct instructor of English

Health Sciences: **Jessica DiPalma**, instructor of nursing, and **Sohayla Raja**, senior adjunct instructor of nursing

Mathematics: **Jennifer Penniman**, associate professor of mathematics, and **Vanda Freeman**, senior adjunct instructor of mathematics

Science and Technology: **Patricia Turner**, professor of anatomy/physiology, and **Donovan Haxton**, adjunct instructor of astronomy

Social Sciences: **Vladimir Marinich**, professor of social science, and **Bob Wasilewski**, adjunct instructor of economics



Arts Building Rises, Student Services Building Breaks Ground

A "topping-out" ceremony was held for the Peter and Elizabeth Horowitz Center for Visual and Performing Arts. The ceremony, a construction industry tradition marking the erection of a building's steel frame, is highlighted by raising a steel beam bearing a tree to the top of a building. The building is expected to open by fall 2006.

Immediately following the topping-out, ground was broken for the Student Services Building, which will house admissions, financial aid services, bookstore, cafeteria, and other services. A fall 2007 opening is planned.

▼ Outstanding Faculty Member Sue Frankel (center) and students Maria Diaz, Phil DesRosier and Annette Zeender.



Md. Students Gain a Global Perspective

Community Colleges Join To Step Up Overseas Study

– THE WASHINGTON POST July 3, 2005

Program puts students on the fast track to nursing

– BALTIMORE SUN July 24, 2005

New track gives HCC program a real home for the first time

– COLUMBIA FLIER/HOWARD COUNTY TIMES May 7, 2005

Overcoming Challenges Together for Education

Husband, Wife Graduate From Nursing Program

– THE WASHINGTON POST May 19, 2005

College dedicating room to honor Kittleman

– COLUMBIA FLIER/HOWARD COUNTY TIMES April 28, 2005

Laurel College Center to add new degree programs

– LAUREL LEADER April 28, 2005

Journey to achievement

550 graduates of Howard Community College reach an academic milestone.

– BALTIMORE SUN May 22, 2005

Impressive direction marks HCC's staging of 'Streetcar'

– BALTIMORE SUN April 22, 2005

A public-private partnership shines at Howard Community College

10 – BALTIMORE SUN April 13, 2005

Being a class clown for a grade

Yo' Mama's Cookin' learns the art of improvisation while serving up a dash of unscripted humor for audiences at Howard Community College.

– BALTIMORE SUN April 1, 2005

New Laurel College Lab, State Programs Target Nursing Shortage

– BUSINESS MONTHLY March 2005

HCC offers more than diplomas

Theater, summer programs entertain adults and kids

– BALTIMORE SUN March 20, 2005

A step for struggling students

Coaches: A new HCC program provides one-on-one assistance to help those enrolled in basic classes make the grade

– BALTIMORE SUN March 13, 2005

HCC to Build Entrepreneurial Hub Via New Program

– BUSINESS MONTHLY February 2005

Play by Play, a Dramatic Development

Professional Theater in Residence Sets Howard Community College Apart From Others

– THE WASHINGTON POST January 20, 2005

New building at HCC moves closer to reality

Ehrlich proposes funding for student services facility

– BALTIMORE SUN January 30, 2005

Wellness center to open at HCC

College will use \$100,000 grant to fund health-related services

'The model ... is very innovative'

– BALTIMORE SUN December 28, 2004

U.S. funding to help boost HCC nursing

Federal money to enable school to raise program's enrollment

– BALTIMORE SUN November 23, 2004

HCC closes deal on center

For a \$5.2 million purchase price, an 18th-century Elkridge estate has a new owner

– BALTIMORE SUN November 21, 2004

Ethics on a case-by-case basis

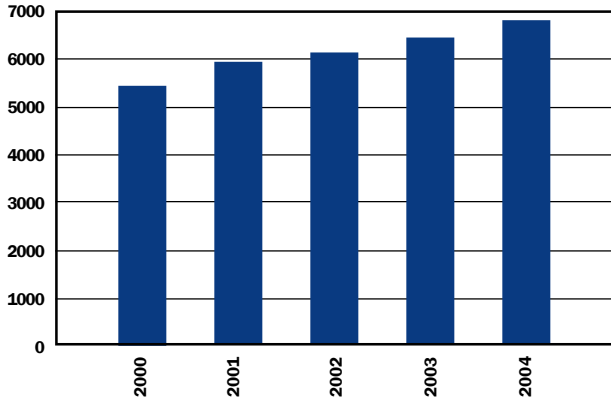
Students tackle ethics on case-by-case basis

– BALTIMORE SUN November 20, 2004

ENROLLMENT, BUDGET AND OTHER NUMBERS

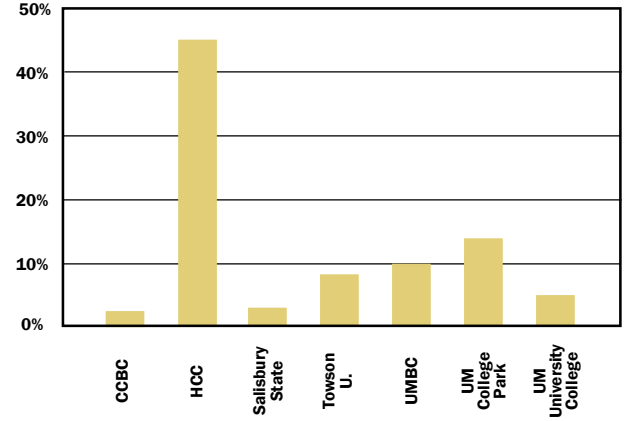
Fall Enrollment

Credit Students



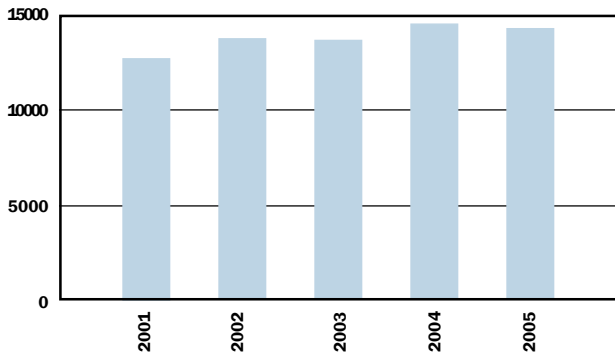
Where Howard County Goes to College

Top 7 Maryland colleges and universities enrolling Howard County undergraduates (Fall 2004)



Enrollment

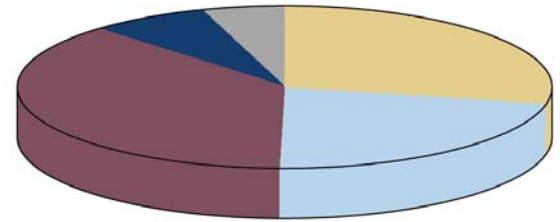
Noncredit Students



HCC Budget

Sources of Funds

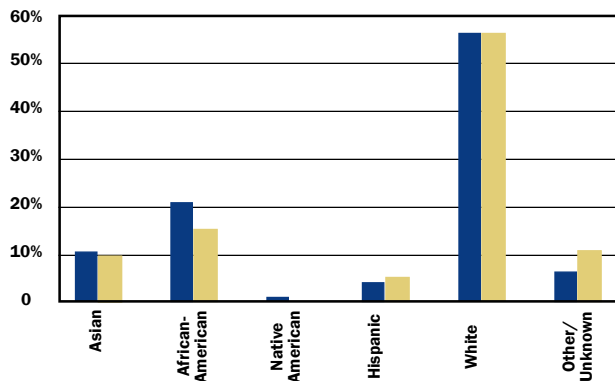
- County = 33%
- State = 16%
- Tuition / Fees = 38%
- Auxiliary = 7%
- Other = 6%



FY2004 Budget: \$51,429,000

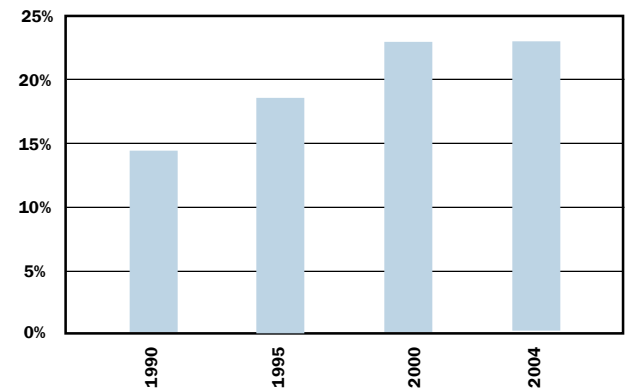
Ethnicity

- HCC Credit Students
- HCC Noncredit Students



Share of High School Seniors

Percentage of Howard County graduating class enrolling at HCC



THE HCC EDUCATIONAL FOUNDATION, INC.

FY 2005 DONOR REPORT

2005 Annual Report to the Community: Letter from the HCCEF chair



Dear Friends:

“The college looks so different.”

That phrase, said in various ways, is one of the most common expressions at HCC these days. The new buildings and Quad give the campus a dramatically different appearance. And those changes have taken place just in the last three years. As HCC celebrates its 35th birthday, it becomes striking how the college has progressed since the doors first opened for classes in 1970.

The same can be said for the HCC Educational Foundation. Twenty-seven years ago, the foundation was only a gleam in the eye of HCC Trustee Celonia Walden. Thanks to Mrs. Walden’s vision and leadership, the foundation is a vibrant organization that provides millions of dollars in scholarships and educational services. What’s more, the foundation has added to the community’s quality of life with events like the Columbia Classic Grand Prix.

Of course, it’s not the foundation that has brought Mrs. Walden’s vision to life, but the many people behind it: The donors, the volunteers, the board members, and the staff. Their support is what has made HCC the model community college that it is today and allowed us to help so many of our students succeed.

For that reason, the 2005 Donor Report honors both Mrs. Walden and the many people whose generous support has been essential to the success of Howard Community College. I hope you enjoy it!

Sincerely,

Barbara Van Winkle
Chairperson

Howard Community College Educational Foundation

HCC Educational Foundation Board of Directors

Barbara Van Winkle, *Chairperson*
Nancy Adams Personnel

Katherine Rensin, *Vice Chairperson*

Mary Ellen Duncan, *Secretary and HCC President*

Alexander Ruygrok, *Assistant Secretary*
Cross Country Settlements

Edward L. Waddell, *Treasurer*
Cardoni Waddell, LLC

Robert I. Jeffrey, *Assistant Treasurer*
Legg Mason Wood Walker, Inc.

Roger Caplan, *HCC Trustee Liaison*

Tudy Adler
Steven H. Adler Big & Tall Men’s Apparel

Sharon Akers
United Cerebral Palsy of Central Maryland

Tim Brown
GE Capital

David Bullard
Paychex

Michael W. Davis, Esq.
Davis, Agnor, Rapaport & Skalny, LLC

Joanne Eyre
Eyre Bus Service

Willis E. Gay

Michael I. Greenebaum
Greenebaum and Rose Associates, Inc.

Peter Horowitz

Debra Huber

Kay Kapoor
Lockheed Martin Information Technology

David Kelley
Quality Associates

Se Ung Kim
Cosmopolitan Incorporated

Susan L. McKillip
Long & Foster Realtors

Bobby Mitchell
Putting on the Ritz

P. Michael Nagle
Nagle & Zaller, PC

Stephen A. Newhouse
Atlantic Builders Group, Inc.

William O’Connor, Jr.
Citizens National Bank

Barbara Schulte
Ellicott City Properties, Inc.

Mary Ann Scully
Howard Bank

Harvey B. Steinman
Miles & Stockbridge, PC

Peter P. Tung, Ph.D.
Celera Genomics

EXECUTIVE DIRECTOR
Melissa Matthey
Howard Community College

THE HCC EDUCATIONAL FOUNDATION, INC. FY 2005 DONOR REPORT



Foundation Highlights

- The Foundation's net assets base increased 13% from \$6,012,649 in FY04 to \$6,816,219 in FY05
- Total amount of private gifts received through the Foundation was \$1,974,955
- Total of \$353,093 generated from special events, including \$146,000 from the 2004 Columbia Classic Grand Prix for student scholarships and \$18,691 from the Hunan Manor Restaurant event to benefit Silas Craft Collegians
- Grants, both competitive and non-competitive, generated \$5,858,865
- Overall support from the Foundation to Howard Community College for scholarships, programs and other services was \$2,153,736
- In-kind donations received in FY04 were \$186,440

Campaign Highlights

- Raised \$9,411,816 toward the \$12 million capital campaign goal
- In-kind donations since the beginning of the campaign total \$1,971,957
- Faculty and staff have contributed \$231,446 to date, representing a 32% participation rate in FY05
- Over \$2.5 million has been raised for the construction of the Peter and Elizabeth Horowitz Visual and Performing Arts Center

FY05 Matching State Funds

- Innovative Partnership for Technology Program (IPT): have completed rounds 1-4 for a total of \$657,432
- Private Donation Incentive Program (PDIP): surpassed current PDIP match goal of \$250,000 prior to FY04



Choosing education over driving in style

What's better than winning a brand new Mercedes-Benz automobile? For Blase Cooke, it was better to decline such a fabulous prize in order to help students gain a college education.

Mr. Cooke donated back a 2005 Mercedes-Benz that he won in a raffle at the 2004 Columbia Classic Grand Prix. The \$40,000 resulting from Mr. Cooke's donation went into the foundation's endowment fund.

"We encourage our people to get involved in the community, so it is important that we support them financially," said Mr. Cooke, CEO of Harkins Builders.

The Founding of the Foundation



When Celonia Walden was appointed to the HCC board of trustees in 1972, she took on her new role with the zeal of a high-achieving student, aggressively learning all she could about governing an institution of higher education. “One of the things I did on the board back then was go to all the [educational] conventions and collect data,” Mrs. Walden said.

Raising funds was one topic that caught her interest, so she was ready when the subject came up close to home. Little did she know how big of a role she would play.

“One day, I was talking to John Sundstrom, who was on the board, too, and he said we need money. So I said to him, ‘Why don’t we have an educational foundation?’” To which Sundstrom replied, “Celonia, you’re the chairman.”

Thus, the HCC Educational Foundation was established in 1978. As foundation chair from 1979-1983, Mrs. Walden worked tirelessly to find the money she knew that HCC required to give its students the kinds of opportunities they needed to succeed. “At that time, we only had the one building,” she recalls, “but everyone wanted to come and take advantage of what the college had to offer, and to see other classes and facilities added to it. I loved working on that, and in the end, it just worked out beautifully.”

Today, the offices of the HCC Educational Foundation are abuzz with the same kind of enthusiasm that Walden instilled in it twenty-seven years ago.

“We’re here to support the college however we need to,” says the foundation’s executive director Missy Matthey, be it helping retain students who require financial aid, or funding new buildings, such as the Horowitz Visual and Performing Arts Center already under construction.

In the 2005 fiscal year alone, the foundation will disburse nearly \$2.2 million dollars to the school’s various scholarships, capital projects and endowments—a figure that has nearly doubled in only four years.

“Oh gosh, to see all the money that the Foundation raises today, and that it helps the students the way it does..wow...it’s just wonderful,” Mrs. Walden says.



Celonia Walden’s daughter, Celonia, graduated from HCC.

THE HCC EDUCATIONAL FOUNDATION, INC. FY 2005 DONOR REPORT

DONOR HONOR ROLL

The Howard Community College Educational Foundation, Inc. is a 501 (c)(3) corporation established with the approval of the Board of Trustees, and has the mission of providing the means for private contributions to be used for the benefit of Howard Community College.

Here we pay special tribute to the donors whose contributions have indeed made us better. This report reflects campaign leadership commitments, and annual gifts and pledge payments received. The list recognizes the generosity of many friends, alumni, corporations, foundations, faculty, staff and organizations for their support. On behalf of the entire HCC community, thank you for making it possible for us to strengthen our college.

CAMPAIGN LEADERSHIP COMMITMENTS - Gifts and Pledges

July 1, 2000 - June 30, 2005

\$1,000,000 and above

- * Peter and Beth Horowitz

\$100,000 to \$999,999

- * College Community LLC
- Bank of America/The Rouse Company Foundation
- The Horizon Foundation of Howard County, Inc.
- Brian J. McIntyre
- **** McCuan Family Foundation
- Leroy M. Merritt
- * John G. Monteabaro Charitable Foundation
- * The Rouse Company Foundation
- Soccer Association of Columbia/Howard County

\$50,000 to \$99,999

- * Boyer-Gilbert Family Foundation
- Francis and Yolanda Bruno
- Clarence and Marti Carvell
- The Commonwealth Foundation
- Chad and Ginni Dreier
- Ellicott City Lions Club
- * Rand and Cheryl Griffin
- Howard Bank
- * Howard County General Hospital
- * Michael and Carolyn Kelemen
- Larry and Susan Patrick
- Riparius Construction, Inc.
- * Barb Van Winkle
- Williamsburg Group, LLC



\$25,000 to \$49,999

- Allfirst Foundation
- American Healthways
- * Apple Ford
- Brantly Development Group, Inc.
- Senator James Clark, Jr.
- * Citizens National Bank
- The Coleman Foundation
- * The Columbia Bank
- ** The Columbia Foundation
- Hostetler Management Company, LLC
- MedStar Health
- David and Kathleen Mikszan
- Michael and Debbie Nagle
- R. Wayne and Melissa Newsome
- *** Reese and Carney, LLP
- James and Dessie Moxley
- ** SDC Group, Inc./James R. Moxley, III
- * The Jim and Patty Rouse Charitable Foundation, Inc.
- * Mary Ann and Chuck Scully
- Edward St. John
- Frederick and Sandy Schoenbrodt
- * Jim and Barbara Schulte
- Richard and Lois Talkin
- Verizon Foundation

\$10,000 to \$24,999

- William and Victorine Adams Foundation
- ADC Foundation
- Anonymous - 1
- Angel Dental Care
- Columbia Town Center
- Rotary
- Comcast Foundation
- * Roberta E. Dillow
- * Mary Ellen Duncan
- Joanne M. Eyre
- ** Jon and Gloria Files
- Freddie Mac Foundation, Inc.
- Conrad and Ellie Gordon
- Harkins Builders of Howard County
- Michael and Nichole Hickey
- * Robert and Bach Jeffrey
- James H. Kaufman
- Randy and Marilyn Kawamura
- * Kiwanis Club of Ellicott City
- *** Valerie Lash
- * Barbara Livieratos/Vlad Marinich
- George Preston Marshall Foundation
- Richard and Jane McCauley
- Lois and Charles Miller Foundation
- Miller & Smith
- Mitchell & Best
- Thomas and Shelley Mulitz
- Harold and Toby Orenstein
- Charles and Delphine Peck
- Bruce A. Pfeufer Foundation
- Rotary Club of Columbia
- Alexander and Terry Ruygrok
- ** Steven Sachs
- Siemens Building Technology, Inc.
- Maurice and Rita Simpkins
- Whiteford, Taylor & Preston
- L.L.P./LaVerna Hahn Charitable Trust

\$5,000 to \$9,999

- * Earl and Mary Armiger
- Joan I. Athen
- Roger and Patti Caplan
- James H. Clark
- *** Lynn Coleman
- Columbia Film Society
- * Constellation Energy Group, Inc.
- Datatel Scholars
- The Enterprise Foundation
- * Roger D. Estep
- Foundation for Mentally Retarded and Handicapped Children
- Chesapeake District
- Civitan International Inc.
- Michael and Nancy Gardner
- * Thomas J. Glaser
- * Kate Hetherington
- * Ann and Wayne Ivester
- *** Padraic and Ellen Kennedy
- Se Ung Kim
- Manekin LLC
- * Missy Matthey
- *** Beckie Mihelcic Chapman
- *** Helen Mitchell
- Darrell and Kathy Nevin
- Provident Bank
- * Riedy Family Foundation
- * Howard and Kathy Rensin
- * Ronald X. Roberson
- Bruce G. Schmickley
- Kerry and Donna Staton
- * Ardell Terry
- * Edward L. Waddell
- Eugene M. Waldron

THE HCC EDUCATIONAL FOUNDATION, INC. FY 2005 DONOR REPORT

Gifts and Pledge Payments

July 1, 2004 – June 30, 2005

\$100,000 and above

- * Peter and Beth Horowitz
The Horizon Foundation of
Howard County, Inc.

\$50,000 to \$99,999

- * Michael and Carolyn
Kelemen
- **** The McCuan Family
Foundation
- * The Rouse Company
Foundation

\$25,000 to \$49,999

- American Healthways
Senator James Clark, Jr.
The Coleman Foundation
Ellicott City Lions Club
The Fountainhead Title
Group
- * Howard County General
Hospital
- * Barbara E. Van Winkle
Verizon Foundation

\$10,000 to \$24,999

- American Chemical Society
- * Apple Ford
- Bank of America
- * Boyer/Gilbert Family
Foundation Inc.
- Brantly Development Group,
Inc.
- Clarence and Marti Carvell
- ** The Columbia Foundation
Columbia Town Center
Rotary
- * Design Collective, Inc.
- * Rand and Cheryl Griffin
Howard Bank
- * Robert and Bach Jeffrey
- * The Jim and Patty Rouse
Charitable Foundation, Inc.
- * John G. Monteabaro
Charitable Foundation
- Brian J. McIntyre
- MedStar Health
- Thomas and Shelley Mulitz
- Harold and Toby Orenstein

- Frederick A. Schoenbrodt,
D.D.S.
- * Jim and Barbara Schulte
Maurice and Rita Simpkins
Soccer Association of
Columbia/Howard County
Whiteford, Taylor & Preston
L.L.P./LaVerna Hahn
Charitable Trust



\$5,000 to \$9,999

- * Earl and Mary Armiger
Citizens National Bank
Charitable Fund
- * The Columbia Bank
Foundation For Mentally
Retarded and
Handicapped Children
Chesapeake District Civitan
International Inc.
- Harkins Builders
The Howard Research &
Development Corporation
- Randy and Marilyn
Kawamura
- Legg Mason Wood Walker Inc.
- Lockheed Martin
- Richard and Jane McCauley
MIE Escrow Company, Inc.
- Michael and Debbie Nagle
Bruce A. Pfeufer Foundation
- Wayne and Melissa
Newsome
- Riparius Construction, Inc.
- Rotary Club of Columbia Inc.
- Alexander and Terry
Ruygrok
- * Mary Ann and Chuck Scully
- ** SDC Group, Inc.
- Richard and Lois Talkin
- * United Way of Central
Maryland
- Women's Giving Circle of
Howard County

\$1,000 to \$4,999

- William L. & Victorine Q.
Adams Foundation
- Anonymous - 1
- ALS Therapy Development
Foundation
- Angel Dental Care
- Ascend One Corporation
- Joan I. Athen
- * Atlantic Builders Group, Inc.
- Atsaiades Associates, Inc
- Baltimore/Washington
Corridor Chamber
Foundation, Inc.
- Boulard & Brush, LLC
- ** Nesbitt and Maggie Brown
BUCS Federal Bank
- * The Caplan Group, Inc.
- * Cardoni Waddell, LLC
- Cengen, Inc.
- * Edward and Joan Cochran
- *** Lynn Coleman
- Colosseum Gym & Fitness
- Columbia Film Society, Inc.
- * Constellation Energy Group, Inc.
- Janet Moye Cornick
- * Corporate Office Properties
Cosmopolitan, Inc.
- Creig Northrop & The
Northrop Team, P.C.
- * Davis, Agnor, Rapaport &
Skalny, LLC
- * Roberta E. Dillow
- Doracon Contracting, Inc.
- * Mary Ellen Duncan
- Charles I. Ecker
- Joyce F. Eng
- * Roger Estep
- Joanne M. Eyre
- Eyre Tour and Travel
- ezStorage Corporation
- Ferris, Baker Watts,
Incorporated
- ** Jon and Gloria Files
- Anabel Fishman
- * Thomas J. Glaser
- * Abigail Glassberg
- Greenebaum & Rose
Associates
- *** Barbara C. Greenfeld
- * Hamel Builders, Inc.
- * Herb Gordon Auto Group, Inc.
- * Kate B. Hetherington
- Michael and Nichole Hickey
- Howard County Economic

- Anne M. Johnson
- K. Craft Associates, Inc.
- *** Padraic and Ellen Kennedy
- * Kiwanis Club of Ellicott City
- *** Valerie E. Lash
- * The Leasewright
Frederick T. Lewis
- Emily Lincoln
- Lincoln Financial Group
Foundation
- Louis Fireison and
Associates, P.A.
- M&T Bank
- The M&T Charitable
Foundation
- * Thomas and Susan McKillip
- * Maryland Therapeutic
Horsemanship
Association
- David and Kathleen Mikszan
- Terri S. Minford
- *** Helen B. Mitchell
- * Jean F. Moon
- * Nagle & Zaller, P.C.
- Patuxent Publishing
Company
- James W. Pfefferkorn
- Provident Bank
- David A. Rakes
- *** Reese & Carney, LLP
- * Riedy Family Foundation
- * Ronald X. Roberson
- Rolling Acres Farm, Inc.
- *** Rotary Club of Columbia
Patuxent
- *** Patricia T. Rouse
- ** Steven Sachs
- * Sandy Spring Bank
- Christopher S. Schardt
- Sharon L. Schmickley
- SCT Software & Research
- Siemens Building
Technologies, Inc.
- St. Joseph Medical Center
- Success in Style, Inc.
- Dorothy Sundstrom
- Sunrise Software Arts Inc.
- SunTrust Bank
- Synergy
- Synthesis, Inc.
- Taylor Foundation, Inc.
- * Ardell Terry
- The Sherwood Corp. t/a JST
Builders
- TYCA Northeast
- *** W.R. Grace Foundation Inc.
- * Edward L. Waddell
- **** Emerson and Celonia
Walden

THE HCC EDUCATIONAL FOUNDATION, INC. FY 2005 DONOR REPORT



\$250 to \$999

- * James Adkins
- Steve and Tudy Adler
- American Business
- Women's Association
- American Society on Aging
- *** Margaret R. Armitage
- * James Bell
- Timothy H. Brown
- * Judith C. Bulliner
- Dwight and Shirley Burrill
- Candlelight Concert Society, Inc.
- **** Ronald H. Carlson
- * Christopher and Ann Cherry
- * Citizens National Bank
- Jim and Adrienne Davis
- Timothy and Maureen Dell
- Christopher and Beverly Doyle
- Linda E. Emmerich
- Enterprise Electric Company
- * James and Laura Grant
- * Andrea Morris Gruhl
- *** JoAnn D. Hawkins
- Infiniti Telecom and Technologies, Inc.
- ** Zoe A. Irvin
- * Wayne and Ann Ivester
- Daniel and Ann Keller
- ** Jeanette Kissel
- David Kolodny
- * Fran P. Kroll
- * Carolyn B. Lovell
- William E. Lowe
- Marathon Title Company, Inc.
- March-Westin Co., Inc.
- Erin M. Marek
- * Vladimir G. Marinich
- *** Janice Marks
- * Missy Matthey
- John and Elizabeth Mayotte
- Toshiko Mecklenburg
- *** Rebecca W. Mihelcic
- Chapman
- *** Margaret M. Mohler
- Stephen A. Newhouse
- Nottingham Properties, Inc.
- Princeton Sports of Columbia
- * Howard and Katherine Rensin
- Kadan Sau

- Robert and Jane Sinclair
- Lorenzo Singleton, Jr.
- Alan and Jennifer Stahl
- Shawn P. Stokes
- Anne H. Stuart
- * Tailored Services Inc., T/A Bed & Bones
- Town and Country Stables
- David J. Treibman
- Arthur W. Trump, Jr.
- Peter and Mary Beth Tung
- Delegate Frank S. Turner
- Verizon
- * Philip J. Vilardo and Lisa Wilde
- Rose Volynskiy
- James Jo Jun Wang
- Andrew and Susan Weinberg
- Lee M. Wildemann

\$1 to \$249

- Anonymous - 18
- Morris and Hilda Aefsky
- Sharon L. Akers
- Roy and Susan Appletree
- Fredrick Arend
- * Elizabeth Auldrige
- Ben R. Baker
- *** Sandra Balcer
- Michael K. Barron
- Delegate Gail H. Bates
- Robin Bauer
- Mary E. Becker
- Bell Electrical Systems, Inc.
- * Randy R. Bengfort
- Magdalena Benitez
- Cheryl L. Berman
- **** Dick and Kathy Bestany
- Beta Sigma Phi International
- Barbara Bice
- Michele Stevens Bilello
- Teresa Billet
- Shawn Bingham
- Ellen Blackwell
- Helena Blondell
- Larry and Candace Blosser
- Bruce I. Blum
- Paul and Dorothy Bordenet
- Michael Patrick Boyd
- * Barbara Brickman
- Anne Broderick
- Mary Jo Broderick
- Philip K. Browning
- Charles and Patricia Bubeck
- Robert and Maryann Buchmeier

- David R. Bullard
- * David and Barbara Buonora
- Angel Clark Burba
- Patricia A. Bylsma
- Elizabeth A. Caldwell
- * Kasi Campbell and Shawn Riley
- Marjorie A. Cangiano
- Linda M. Caplan
- David Carter
- Shirley Chao
- Beth Chernichowski
- Michael and Heidemarie Cherry
- Eileen Clegg
- Rickie Coffey
- * Kevin and Linda Collins
- Combined Charity Campaign
- John and Donna Cookson
- Robin Becker Cornblatt
- * Pamela M. Cornell
- Alan Coxhead
- * Janet L. Cullison
- * Margaret Cullison
- Margaret L. Davies
- Thomas James Delehanty
- Jane Dembner
- Kathryn Doherty
- Judith Dohner
- Valentinas Drazdys
- Andrew Driesman
- Eva M. Duff
- Linda E. Dwyer
- Jessie East
- Erin E. Eitemiller
- Stephen and Corinne Eppley
- Norman and Sandy Fairhurst
- Frank Fennell, Jr.
- Ann C. Fielder
- Patrick Finley
- Ida Fioravante
- * Kathy B. Fisher
- Patrice Fitzgerald
- Gail Fleming
- Penny L. Fowler
- Susanne Fox
- * Jean M. Frank
- Susan Frankel
- Mr. and Mrs. Dan Frasier and Emily
- Kenneth Fredericks
- Fresh Enterprises, Inc.
- * Sharon A. Frey
- *** Daniel Friedman
- Kenneth and Anna Elaine Gardner
- Naomi Geer
- Gerald Gietka
- Hal and Pat Gilreath

- * Dorothy E. Gleit
- Heidel K. Goldenman
- Eva Granzow
- * Patricia M. Grim
- Mark H. Grimes
- Carleen Grossman
- Rita Guida
- * Farida P. Guzdar
- Kenneth and Anne Hart
- Tara J. Hart
- Lee Hartman
- Roger R. Hartman
- Timothy and Patricia Harwood
- ** Sharon A. Heckler
- Michael G. Heinmuller
- Susan Hellenbrand
- Cheryl T. Henderson
- Michael Hill
- Ann Hoffnar
- * Thelma Ray Holbrook
- Robert Honeygosky
- Vilma A. Hopkins
- Hord, Coplan, Macht, Inc.
- * Stephen J. Horvath
- HTG Insurance Group
- Kathleen A. Huffman
- Maria T. Humphries
- Candace Llyn Hutcheson
- Harriet S. Indik
- Frances J. Jamerson
- James Ferry Photography
- Robert and Catherine Jansto
- Jeanette Jeffrey
- Sally W. Jernigan
- *** Mary Alice Jost
- * James W. Jump
- Kristina Kahan
- * Eileen T. Kaplan
- ** Patricia M. Keeton
- Susan A. Keller
- ** Kathleen M. Kersheskey
- Teresa A. Kirchner
- Virginia Kirk
- Erika Kokal
- Ronald and Deborah Kolessar
- * Anna Kovac
- Linda C. Kuba
- Elizabeth Lancaster
- Duncan M. Lang
- Paul Larsen
- * James O. Lash, Sr.
- * Judith Law
- Jeanette Lazarofsky
- **** Benay Leff
- Ruth L. Leffler

THE HCC EDUCATIONAL FOUNDATION, INC. FY 2005 DONOR REPORT



Becky G. Lessey
 Barry K. Leven
 * Michele A. Lewis
 Larry and Marybeth Little
 Betty A. Logan
 * Diane M. Loiselle
 Mary C. Lombardo
 Brian and Nancy Lund
 Frank T. Lyman, Jr.
 John Lyons
 Theresa A. Madden
 * Robert R. Marietta
 Danielle Marone
 Kathryn Marshall
 Joseph and Virgie Mason
 Ann B. Massey
 Tijuana D. Mayo
 Charles Mays
 Linda McCabe
 Julie McCallister
 Alan and Patricia McLaine
 Gary and Deborah Mechtel
 Susan Gardner Mehr
 Richard and Jan Meyer
 Donna L. Mitchell
 Ali Motamedamin
 Theresa Murphy
 Bernard Nalty
 Menthol N. Ndamukong
 Barry and Carol Nelson
 * Mary E. Newberger
 Carol Newman
 Tonya Osmond
 Judy E. Pangborn
 Karen Paris
 Connie Pavlovsky
 * Jennifer L. Penniman
 Susan W. Perl
 Randall W. Phelps
 Phi Theta Kappa
 Richard and Christine Philps
 * Kimberley J. Pins
 Priscilla Pitts
 Planned Systems
 International, Inc.
 Maria C. Poppe
 Wayne and Ana Lucia Porter
 Rosemarie Presley
 Linda J. Press
 Rebecca Price
 Christopher Puin

William and Alissa Putman
 David and Ladonna Rader
 Laura Carrillo Redcay
 Linda Reed
 Elke Reuning-Elliott
 Pat and Kate Revelle
 * Cheryl M. Reynolds
 Mary S. Richards
 John and Carol Roberts
 Stanley and Dotty Rodbell
 Catalina Ruiz Rojas
 Irma I. Rosado
 Martha Rosen
 Robert and Barbara Russell
 Alexander S. Saad
 Sharon Sachs
 Mary Elaine Sagman
 ** Bernadette Sandruck
 Robin T. Saunders
 Allen and Kaethe Schick
 Carolyn T. Schlanger
 Alan Schneider
 Nancy Lark Schulze
 Scitor Corporation
 Tamara C. Sciuillo
 Lenore Seliger
 Glennor Shirley
 John A. Siebs
 ** Emily T. Slunt
 Alan and Jeannette Smith
 Lennie C. Smith
 ** Nancy L. Smith
 Richard and Gloria Smith
 Scott and Julie Sokolowski
 John Somers
 Martha A. Sosebee
 St. John United Church
 Gary and Marilyn Staley
 Sylvia Stanford
 Julian Stanley
 Janene C. Starr
 Peggy J. Stover-Catha
 Rick and Jean Straka
 Rosalia Strauss
 Paul and Mary Streb
 * Catherine W. Sutton
 * Susan K. Sweeney
 Carolyn C. Taggart
 Jacqueline L. Taylor
 Onada Taylor
 * Scott M. Thomas
 Vivian Thompson
 Art and Diane Tollick
 * Charles P. Toth
 T. James Truby
 Patricia J. Turner
 William A. Vail
 Stephen A. Valenti
 Patricia Van Amburg
 Candance Van Sickle

Verizon Services Corp
 Clint and Beverly Dustin and
 Family
 * Peggy L. Walton
 Robert Watson
 Richard and Debby Waxler
 Arla and Bob Webb
 John and Suzanne Weiss
 * Mark A. Wernsman
 * Linda D. Wiley
 * Natalie Wise Woodson
 * Carolyn Wuyts
 Virginia A. Yates
 Amelia C. Yongue
 Karlyn K. Young
 Nora W. Zacharias
 Jeff and Judy Zaller
 Zonta Club of Howard
 County
 Antonia Zorrilla

**** 20+ years consecutive
 giving

*** 15 - 19 years consecutive
 giving

** 10 - 14 years consecutive
 giving

* 5 - 9 years consecutive
 giving

Government Grants

Howard County Arts Council Inc.
 Department of Finance for
 Howard County
 Maryland State Arts Council
 State of Maryland Treasurer's
 Office

Cafe De Paris
 Clyde's of Columbia
 Comcast Cable
 Communications, Inc.
 Sandra K. Delaney
 Susan N. Donahue
 Expert Security Services, Inc.
 Stephen Fulton
 Aaron Goldfarb
 Susan Hellenbrand
 Norma Hishmeh
 Howard County Family YMCA
 The Howard County Rotaract
 Club
 I.M.P.
 Nancy K. Koepsell
 Frederick T. Lewis
 Lullaby Baby
 Carolyn Males
 Mammoth Golf
 Clare E. McHugh
 Carole H. McKinstry
 The Mall in Columbia
 Melting Pot Restaurant
 Mercedes-Benz USA, LLC
 Rebecca W. Mihelcic-Chapman
 Margaret M. Mohler
 Outback Steakhouse
 Paramedical Personnel of
 Maryland
 Patuxent Publishing Company
 Linda Rose Payne
 Point A Store #320
 Rafet's Hairmasters
 Linda Reed
 Rebecca Ripley
 Roots Market
 Target Marketing
 Tu Van Trieu
 Marc Volkman
 Wachovia Bank, N.A.
 WYPR
 Zapatas Restaurant

Gifts In-Kind for FY2005

AMC, Inc.
 Apple Ford
 The Baltimore Sun
 Bangkok Delight Restaurant
 Block Design
 Sherry Hoffman Blum
 Borders
 Brantly Development Group, Inc.
 The Brickman Group Ltd
 The Business Monthly

All names that appear have been carefully reviewed. However, errors and omissions may occasionally occur. If we have made an error, please notify the Foundation Office at 410-772-4450.

THE HCC EDUCATIONAL FOUNDATION, INC. FY 2005 DONOR REPORT

Capital Campaign Council – FY2005

James R. Moxley, *Co-chair*
Richard B. Talkin, Esq., *Co-chair*, Attorney at Law
Steven H. Adler, Steven H. Adler Big & Tall Men's Apparel
Richard Azrael, Chateau Builders
David A. Carney, Esq., Reese & Carney, LLP
Tim Dell, Columbia National Real Estate Finance
Roberta (Bobbie) Dillow
Jon Files
Michael Galeone, The Columbia Bank
Willis Gay
Edward C. Kohls, AIA, Ayers/Saint/Gross
Susan McKillip, Long and Foster
C. E. (Ted) Peck
Mary Ann Scully, Howard Bank

2004 Grand Prix Advisory Board Members

Michael Nagle, *Chairperson*, Nagle & Zaller, PC
C. Alan Jefferson, *Chair Elect*, Wachovia Bank
Rebecca Bafford, Columbia Arts Center
Rachelina Bonacci, Howard County Tourism
Michael Drummond, Harkins Builders
Dotty Doub, Patuxent Publishing Company
Katie Feltz, Coca-Cola
Nancy Gill
Abigail Glassberg, Trammell Crow Company
Brian Harlin, More Than Just Signs...
Timothy Harwood
Oliver Kennedy, Equestrian Sports & Promotions
Padraic Kennedy
Liz Lavine, Countryside Properties
Richard Lindstrom, Gordon, Feinblatt, Rothman, Hoffberger & Hollander, LLC
Erin Longenecker
Andrew Maggio, Expert Security Services, Inc.
Betsy Mayotte
Terri Minford, MD, Misty Meadow Stable
Stephen Newhouse, Atlantic Builders Group
Roger Pedersen, Marathon Title
Alexander Ruygrok, Cross Country Settlements
Eric Stein, Decanter Fine Wines
Michael Stein, Wachovia Bank
Jamie Waldren, Legg Mason Wood Walker, Inc.

HCCEF Statement of Financial Position

As of June 30, 2005

ASSETS

Cash and cash equivalents	\$ 4,510,098
Investments	–
Contributions, net	2,400,535
Prepaid expenses and other assets	5,070
Capital lease receivable	409,349
Deferred financing costs	46,878
Property, net accumulated depreciation	5,127,893
TOTAL ASSETS	\$ 12,499,823

LIABILITIES AND NET ASSETS

Liabilities

Due to Howard Community College	\$ 24,457
Note payable	4,841,249
Deferred revenue	48,287
Refundable advance	1,000,000
Total Liabilities	\$ 5,913,993

Net Assets

Unrestricted	\$ 63,191
Temporarily restricted	3,322,868
Permanently restricted	3,199,771
Total Net Assets	\$ 6,585,830

TOTAL LIABILITIES AND NET ASSETS **\$ 12,499,823**

HCC Distinguished Alumni

(Year inducted)

Jennine Anderson '02
Mary Armiger '01
Monty (Yogi) Barrett '03
Barbara A. Bechberger '05
Mary Becker '01
Clarence Carvell '01
Linda Day Clark '05
Walter Clark '04
J. Bradford Coker '01
Janet Cullison '03
Alton D. Davis '01
Arleen Dinneen '02
John Dolan-Heitlinger '02
Lynn Doughty '02
Christopher B. Emery '05
Barbara Fenske '02
Claire Ferguson '03
Giannella Garrett '01
Charles Daniel Green, Sr. '05
Tracey Goldstein '02
Sandra Haskell-Feneley '01
Michael Hendricks '02
Nichole Hickey '01
Ellen Jenkins '04
Ralph Jones '05
Mary Alice Jost '02
Margaret J. Kahlor '05
Kathleen Kersheskey '04
Richard Kirchner '04
Teresa Kirchner '01
Marie Kittelberger '01
Glenda Kruger '04
Barbara Larimore '04
Judith Lewis '04
Doris Ligon '01
Kathleen Liparini '01
Lawrence Madaras '03
Michael Maiman '05
Christopher Marasco '04
June Martyn '05
Margaret Mauro '01
Bobbie McAdam '01
Toshiko Mecklenburg '02
David Mikszan '05
Bobby Mitchell '01
Bette O'Connor '01
James Robbins '01
Kelly Anne Salapong '03
M. Hillery Scavo '05
Holle Schneider-Ricks '04
Teresa Schreyer '01
Jennifer Serene '03
Rafia Siddiqui '03
Janice Staples '04
Sharon Strobel '01
Anthony L. Summers '05
Kayla Tollen '02
Helene Vanderburgh '02
Lisa Mauck Weiland '05
Kathleen A. Weller, RN '05
Gail Wenocur '01 (deceased)
Michael Wolf '01

20

2005 Alumnus of the Year



Nichole Hickey

Artist

Nichole spent twenty years as a human resource and personnel management professional before pursuing her love for the visual arts as a full-time second career. After a 20-year formal education hiatus, she enrolled at Howard Community College and found a positive and nurturing environment that enabled her to attain academic success far beyond her personal expectations. She graduated from HCC in 1991 with an associate degree in fine arts with the highest honors. In fact, she was HCC's 1991 Outstanding Graduate in Fine Arts!

Nichole has been a dedicated alumna and positive advocate of HCC and she and her husband recently made a generous gift to the Peter and Elizabeth Horowitz Visual and Performing Arts Center.

She has been a resident artist at the Howard County Center for the Arts for more than a decade. She served as a member of the Baltimore Watercolor Society's board of governors, as the education coordinator for a local arts and crafts center, and a volunteer for local arts organizations.

In the fall of 2002, Nichole returned to work part-time as deputy director for the preeminent Columbia Festival of the Arts. She was responsible for developing visual arts programming and administering the business operations of the organization. In November 2004, the board of trustees named Nichole as the full-time managing director and CEO of the Festival.

We are very proud of Nichole's extraordinary contributions to the arts in Howard County and her many accomplishments and generous support of HCC and our community.

2005 ANNUAL REPORT TO THE COMMUNITY

Published by the Howard Community College Office of Public Relations and Marketing
10901 Little Patuxent Parkway | Columbia, MD 21044 | 410-772-4810 | TDD 410-772-4822 | www.howardcc.edu

September 2005



HOWARD
COMMUNITY COLLEGE

You Can Get There From Here.

10901 Little Patuxent Parkway
Columbia, Maryland 21044-3197

www.howardcc.edu

